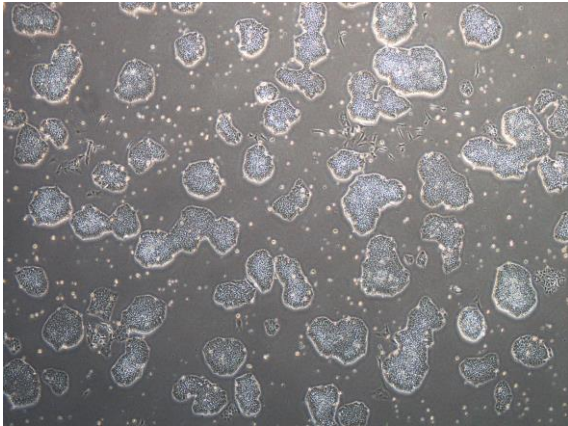
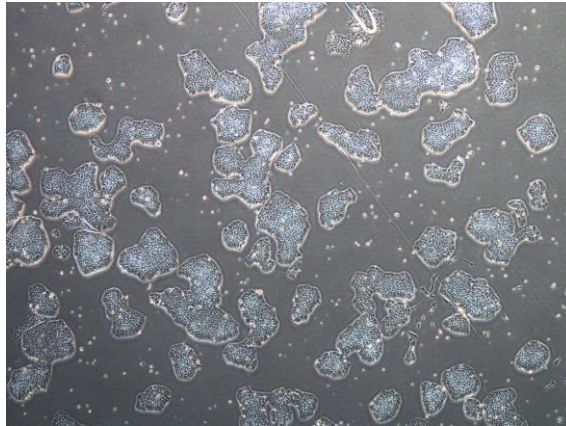


【 CiRA-j-1353 】 Morphology of iPSC colonies

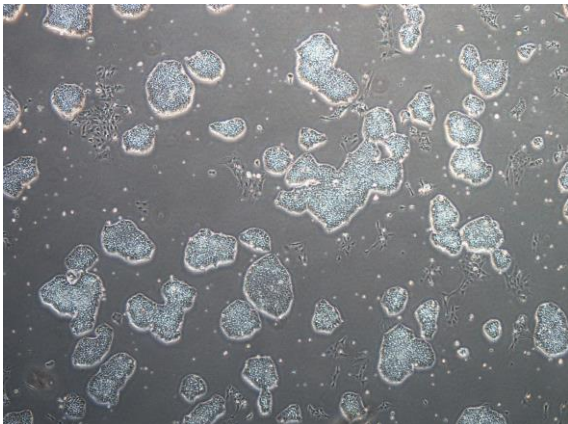
CiRA-j-1353-A: passage-3



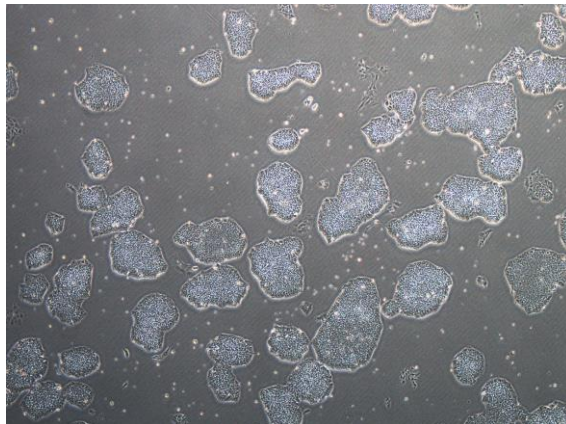
CiRA-j-1353-B: passage-3



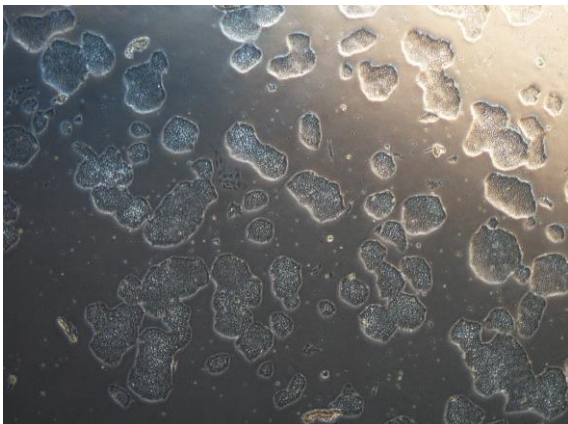
CiRA-j-1353-C: passage-3



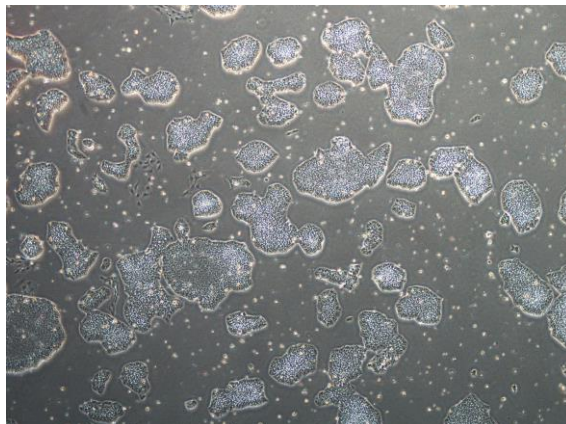
CiRA-j-1353-D: passage-3



CiRA-j-1353-E: passage-3



CiRA-j-1353-F: passage-3



(All images were captured at 4x magnification)